



Savonlinnan kaupunki

Savonlinna - city on Lake Saimaa, Finland



City on islands



12 million people within 5 hr travel distance

By car

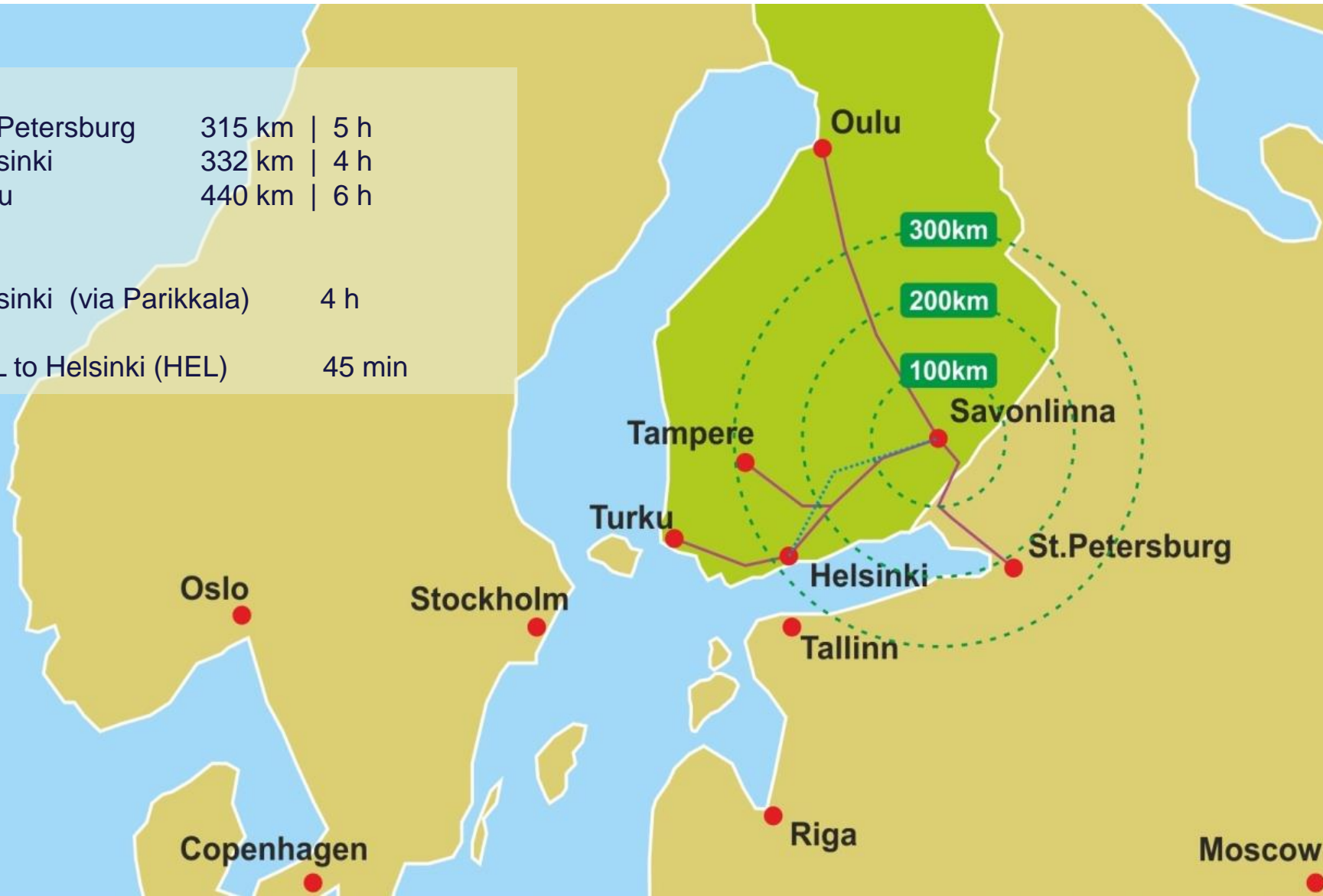
- St. Petersburg 315 km | 5 h
- Helsinki 332 km | 4 h
- Oulu 440 km | 6 h

By rail

- Helsinki (via Parikkala) 4 h

By Air

- SVL to Helsinki (HEL) 45 min





History of Savonlinna

- Settlement in the area began around 900 AD.
- Olavinlinna Castle was built in 1475.
- Savonlinna received its city rights in 1639 from count Per Brahe.
- The Public School of Eastern Finland was established in 1639.
- Saimaa Canal was built in 1856, connection to the Baltic Sea
- The first Savonlinna Opera Festival was held in 1912.
- Teacher education started in Savonlinna in the 1950s.
- With the development of national parks in the area since 1980's and summer festivals, Savonlinna has become one of the top summer tourism destinations in Finland



The spa and the Kasino building from south-east Huvilakatu at the beginning of the 20th century.





"Entertainment and socialising were a vital part of the spa experience. A special intendant was hired to entertain the spa guests. A picture from the spa park."



Geography of Savonlinna

- Savonlinna is located in the Lake Saimaa archipelago at an intersection of waterways.
- The city's surface area covers 3,597.71 square kilometres.
- About 38% of the city surface area is covered in water: this includes lakes Haukivesi, Pihlajavesi and Puruvesi.
- Lake Pihlajavesi alone has more than 3,800 islands.
- At the beginning of 2013, the city expanded with a merger of adjoining municipalities Punkaharju and Kerimäki
- Today, Savonlinna has some 37,000 inhabitants.
- Savonlinna is home to the world's largest wooden church in Kerimäki and Punkaharju scenic area where Finland's first tourist hotel was built in the 19th century.



- One of the best known national parks in Finland: Linnansaari National Park is located in Savonlinna. It represents unspoiled Lake Saimaa nature
- The City of Savonlinna is renowned for its respect of nature and the environment: on March 2013, the city proclaimed itself the official home of the Saimaa ringed seal – an endangered lake seal species living as a relic from ice age in the lakes around the city.





The economic structure

- Service sector (including tourism) 72%
- Industry and construction 25%
- Agriculture and forestry 3%







Education in Savonlinna

Savonlinna provides a wide range of educational opportunities

University of Eastern Finland, Savonlinna campus

www.uef.fi

Mikkeli University of Applied Sciences

www.mamk.fi

Tanhuvaara Sports Institute

www.tanhuvaara.fi

Savonlinna Music Academy

www.savonlinnamusicacademy.com

Savonlinna Vocational College

Summer University of Savonlinna

Savonlinna Christian Institute

Savonlinnan lyseon lukio upper secondary school

Savonlinnan Taidelukio upper secondary school focusing on arts

Savonlinnan Kerimäen lukio upper secondary school

Savonlinnan Punkaharjun lukio upper secondary school

Linnala College

Puruvesi College

Savonlinna Music Institute

Taidekoulu Hyrrä art school

Culture

Savonlinna is an international city of culture

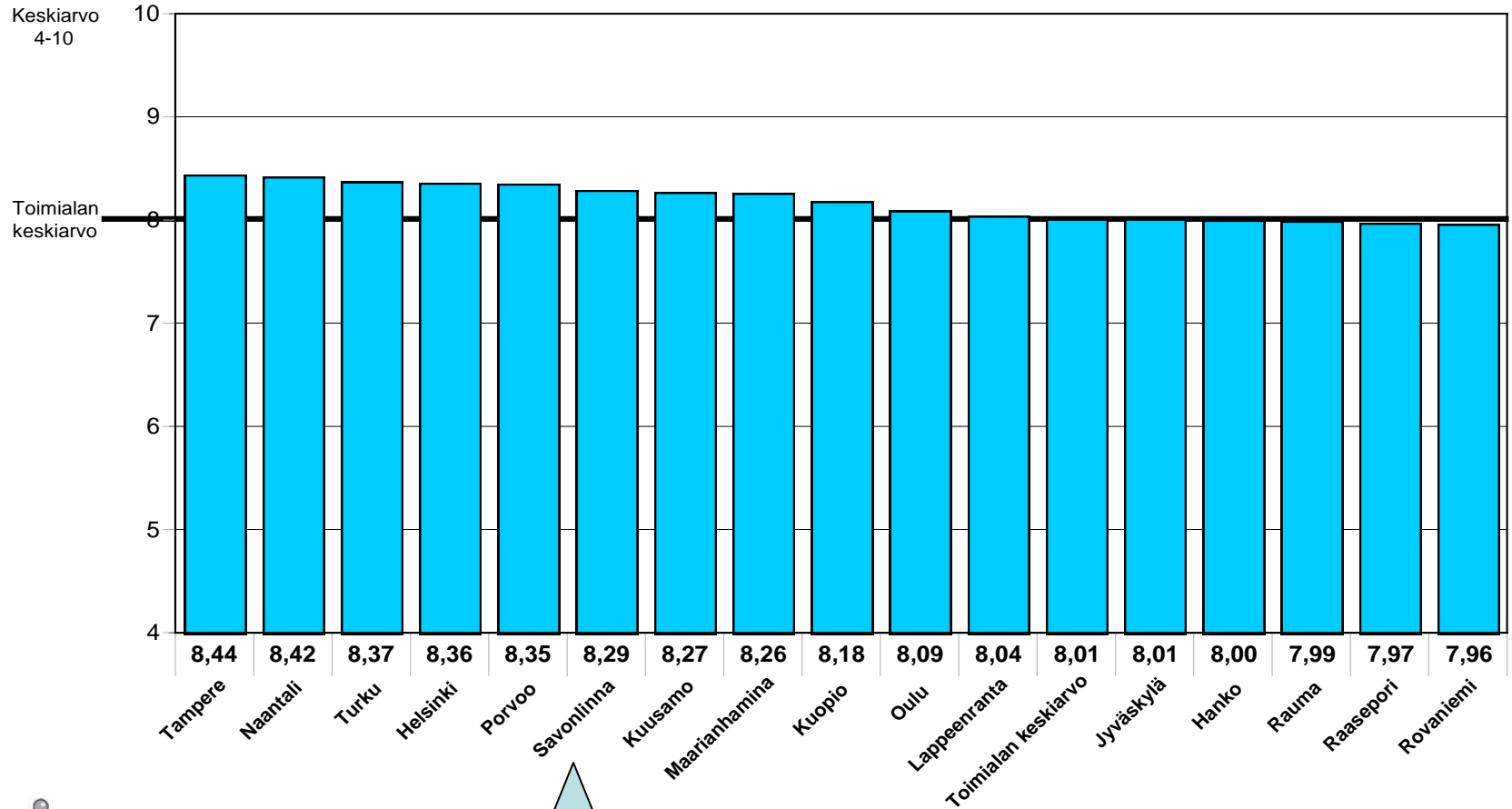
- **Savonlinna Opera Festival** www.operafestival.fi
- Savonlinna Theatre and Summer Theatre
- Savonlinna Orchestra
- Savonlinna Brass Band
- Savonlinna upper secondary school for arts and music
- Savonlinna Concert Hall
- Art galleries
- Choirs
- Regional museum
- Doll museum





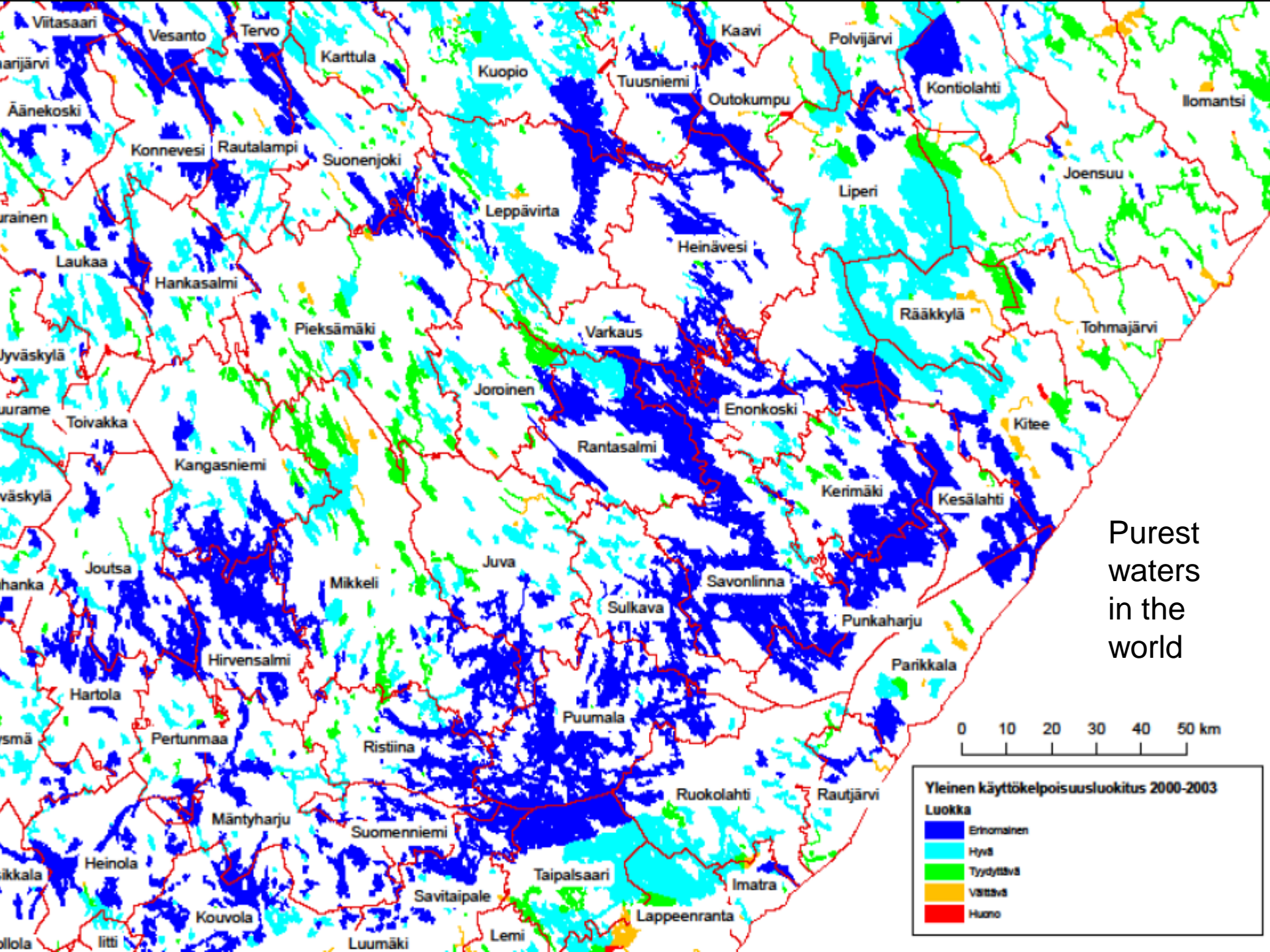


The image of Finnish cities



Tammikuu-helmikuu 2009
8301/VR/pka/jupa
Kopiointi kielletty

Suomi tänään 1/09
Kaupungit ja kunnat matkailukohteina 2009
15-79v kuluttajat



Purest
waters
in the
world

Yleinen käyttökelpoisuusluokitus 2000-2003

Luokka	
Erinomainen	Hyvä
Tyydyttävä	Vähä
Huono	

Completed projects

- Highway 14, the Savonlinna parallel route and the new deep-water channel
- A new deep-water harbour has been completed in 2015 and functions as a hub of international water transport from the region.
- UPM's new 20 MEur plywood plant investment and the heavy industry area is being extended,
- 50 MEUR bio oil plant investment project
- Parikkala border crossing point – shorter travel time to St. Petersburg, Russia, decision pending



Research and innovation

- Cleantech industry technology park
- Business leaders in pulp and paper industry and cleantech technology and industrial service providers
- Fiber laboratory in co-operation with Lappeenranta University of Technology and Mikkeli University of Applied Sciences
- Industrial/heavy duty electronics testing lab and minicluster
 - Industrial robotics development
- Well-developed networking research including Lappeenranta University of Technology, St. Petersburg State Polytechnical University, Spb Polymerics University, Spb Forest University (Russian Federation).
- Tourism Research Centre of the University of Eastern Finland with specialities in eTourism, lake tourism, sustainability, business networking.



Events and attractions

National
Parks
100 000

Opera
Festival

Spa Hotel
Casino

Olavinlinna
St. Olav's
Castle

Kerimäki
Church

Aquapark
Kesämaa

Forest museum
Lusto

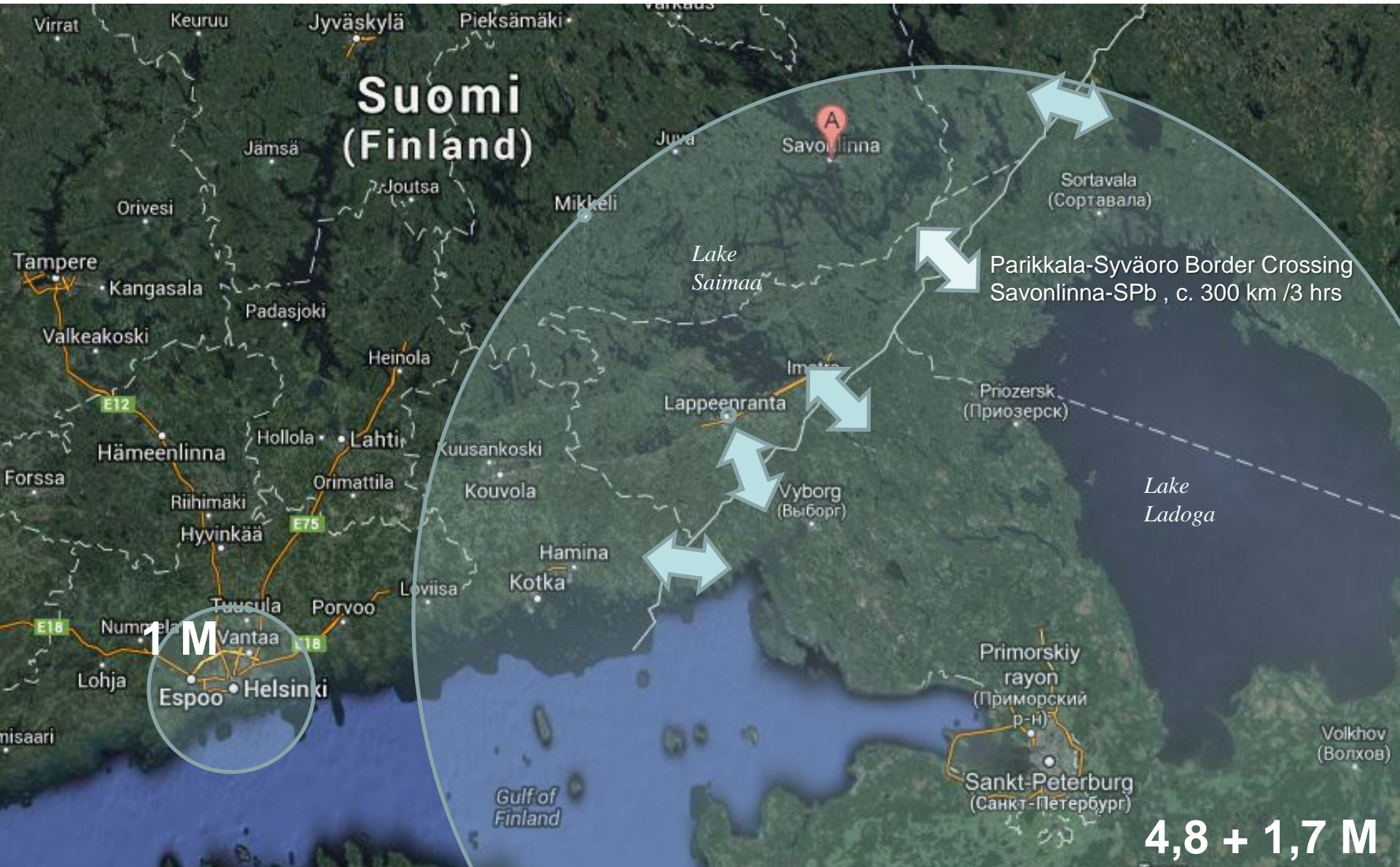
Savonlinna
Museum



Recreation and leisure:

- 8000 vacation homes with 14000-24000 beds
- Centre and HUB for recreational boating in the Saimaa lake area
- Golf courses in Kerimaa and Rantasalmi

St. Petersburg Ladoga-Saimaa Tourism Corridor



4,8 + 1,7 M